

S-7040

Odd form Inserter

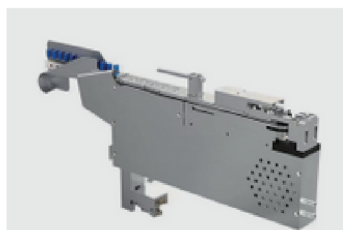


- 1. instead of manual work*
- 2. theoretical speed 5000 points/hour*
- 3. simple operation, high stability*
- 4. flexible deployment production*
- 5. maintenance cost*

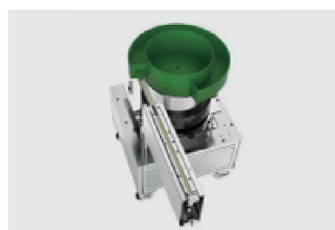
•Feeder type



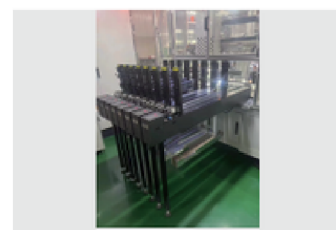
Pallet feeder



Radial feeder



Bowl feeder



Tube feeder

Specification

Theoretical speed	6000 points / hour
Insertion direction	0-360 degrees increment 1 degree
Insertion head	4
Board Size	minimum 50mm * 50mm maximum 400mm * 450mm
Board thickness	0.59-2.36mm
Component specifications	maximum height of 50mm, the maximum weight of 0.3KG
Feeder station	1--4
Feeding mode	Tape feeder,tube feeder,vibration feeder ect...
Clamp mode	mechanical clamping
PCB protection	pressure protection
PCB vision	multi-point MARK point, and component hole matching vision system
Component vision	pin sharp surface identification
Equipment dimensions(LxWxH)	Machine dimensions: 1600mm × 1600mm × 1900mm Station dimensions: 800mm x 800mm x 600mm
Weight	1500KG
Power supply	220v, AC (single-phase) 50/60HZ, 2.0KVA/1.6KW (energy-saving)
System protection	built-in soft protection
Voltage / gas consumption	0.6-0.8Mpa/0.3 cubic meters / minutes
Using the ambient temperature	5-30°
Machine noise	50 decibels
Hole calibration mode	Machine vision system,multi-point MARK vision
Calibration Drive system	AC servo, AC motor
Data input mode	USB interface input (EXCEL document format)

•Clip type



Electric clip

- 1、 High precision and high efficiency
- 2、 Position, speed, clamping force and clamping size can be set
- 3、 Applicable to special shaped components
- 4、 Corresponds to molding components with a height and width of 50MM



Air clip

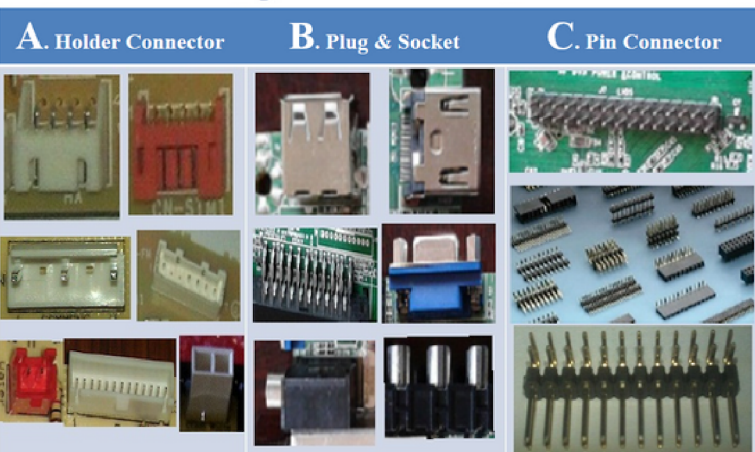
- 1.High flexibility corresponds to various types of shaped components
- 2.Easy to change and replace the jaws for different materials
- 3.Corresponds to materials weighing up to 0.5KG
- 4.Corresponds to molding components with a height and width of 50MM



- 1、 Corresponds to flat surface and high-density inserts
- 2、 Efficient replacement
- 3、 Corresponds to materials weighing up to 0.3KG
- 4、 Corresponds to molding elements with a width of 50MM.

• Available component type

Plug, Socket & Connector



Transformer & Coils



Radial types



IC types



• Application industry

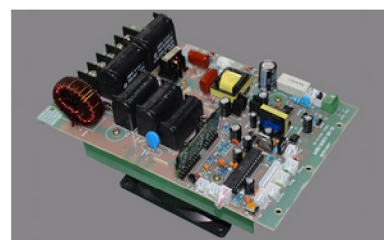
1. power adapter industry



2. mobile phone charger industry



3. home appliance industry



4. automotive electronics industry



5. other electronics industry

